

201 9.5 HW p 612 10, 13-21
 9.7 p 630 21, 32 y

10. $\triangle PQR$

$P(2,4)$

$Q(6,0)$

$R(7,2)$

Reflection x-axis

Rotate: 90° about origin

$P'(2,-4)$

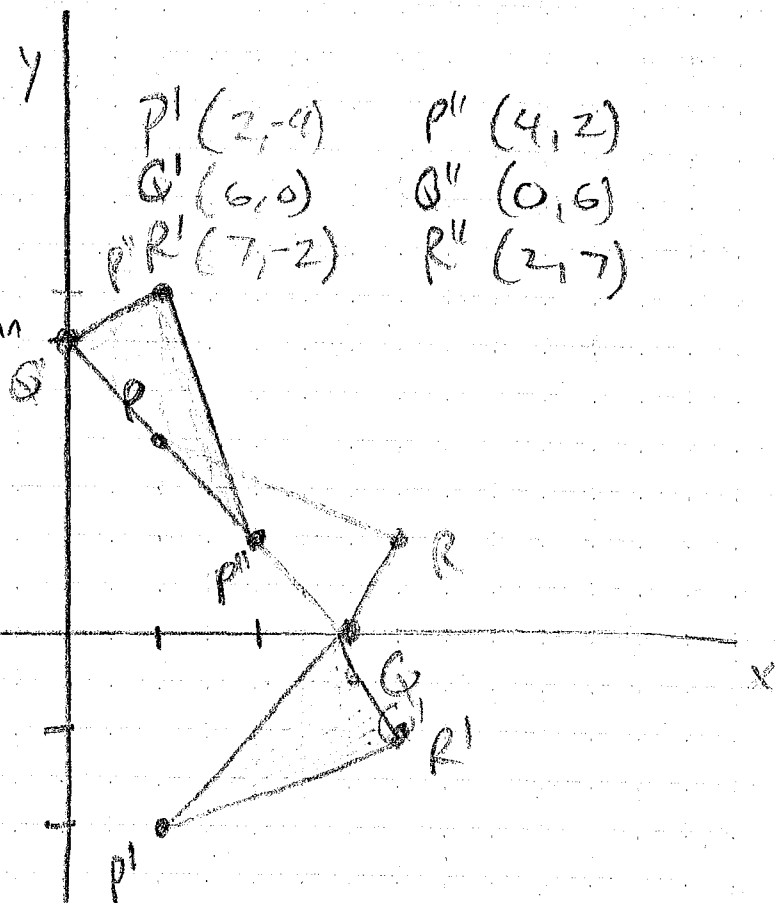
$Q'(6,0)$

$P'R'(7,-2)$

$P''(4,2)$

$Q''(0,6)$

$R''(2,7)$



13. $(x,y) \rightarrow (x+5, y+1)$

followed by 180° rotation about origin

14. Reflection in y-axis

followed by Reflection in x-axis

15. $A''B''C''$

16. line m + line k

17. $\overline{AA'}$ $\overline{AA''}$

18. $2\frac{1}{2} \times 2 = 5.2 \text{ in}$

19. yes

20. $55^\circ \times 2 = 110^\circ$

21. $15^\circ \times 2 = 30^\circ$

p630 21,32

21. $F(-2,-2)$ Translation $(x,y) \rightarrow (x+3, y+1)$

$G(-2,-4)$

Dilation $(0,0)$ SF 2

$H(-4,-4)$

$F'(1,-1)$

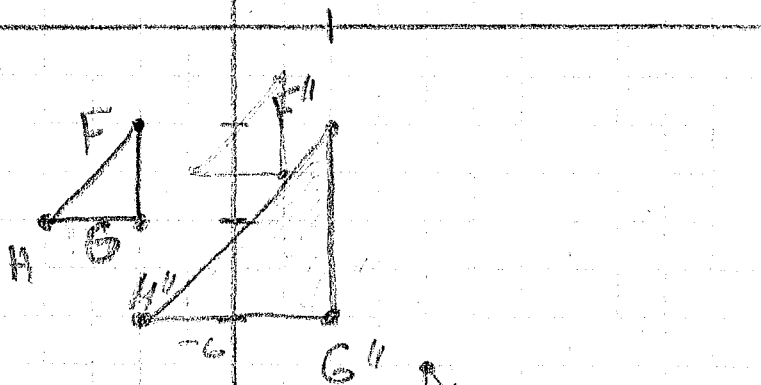
$G'(1,-3)$

$H'(-1,-3)$

$F''(2,-2)$

$G''(2,-6)$

$H''(-2,-6)$



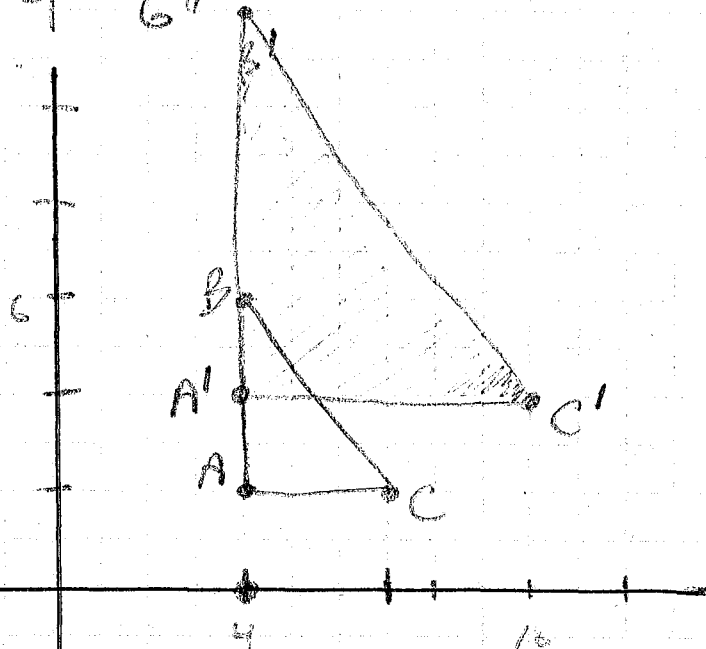
32. $A(4,2)$

$B(4,6)$

$C(7,2)$

Centered at $(4,0)$

S.F = 2



A' $\begin{matrix} 4,0 \\ 4,2 \end{matrix} \times 2 = 2$
 $(4,4)$

B' $\begin{matrix} 4,0 \\ 4,6 \end{matrix} \times 2 = 2$
 $(4,12)$

C' $\begin{matrix} 4,0 \\ 7,2 \end{matrix}$
 $(10,4)$